

## Technical Guideline for integration of the services with edistrict Portal (For the use of Departmental IT Team)

- 1- **Department Registration** :Only the registered department is allowed to avail the facility to integrate their services with e-district/SSDG portal.The Registration form and necessary guidelines may be downloaded from <http://edistrict.up.nic.in>and properly filled signed copy may be send to CeG/SEMT. After successful registration department will receive the registration ID through SMS on the mobile which is given on the registration form. **THIS ID SHOULD BE KEPT IN SECURE MANNER BY THE DEPARTMENT.**
  
- 2- **edistrict IntegrationWebservice URL** : Department has to consume the web service on the service page which was registered during the registration .

URL of web service : <http://164.100.181.28/DeptWebIntService/Service.asmx> , has following methods:

### A) SendRequest Method:

<i>SL #</i>	<i>Input Parameter Name</i>	<i>Format</i>	<i>Example</i>
1	RequestKey	String	Encrypted Pattern
2	DeptRegistraionID	String (Length 32 )	2A1EA89EFE380DC9B051BHGTfDB2A9C9

### Description Of Input Parameters:

- I. **RequestKey** – This parameter can be retrieve on service list page of department, basically an encrypted pattern can be obtained by `HttpContext.Current.Request["RequestKey"].ToString()`
  
- II. **DeptRegistraionID** - 32 bit Registration Id that is uniquely provided to each department at the time at the time of registration

**Output** : Output will a string in the form of XMLdocument that consist ReturnType and UserName Node.The Username will be having the value if and only if the ReturnType Node has value **Success**

### B) SendResponse Method:

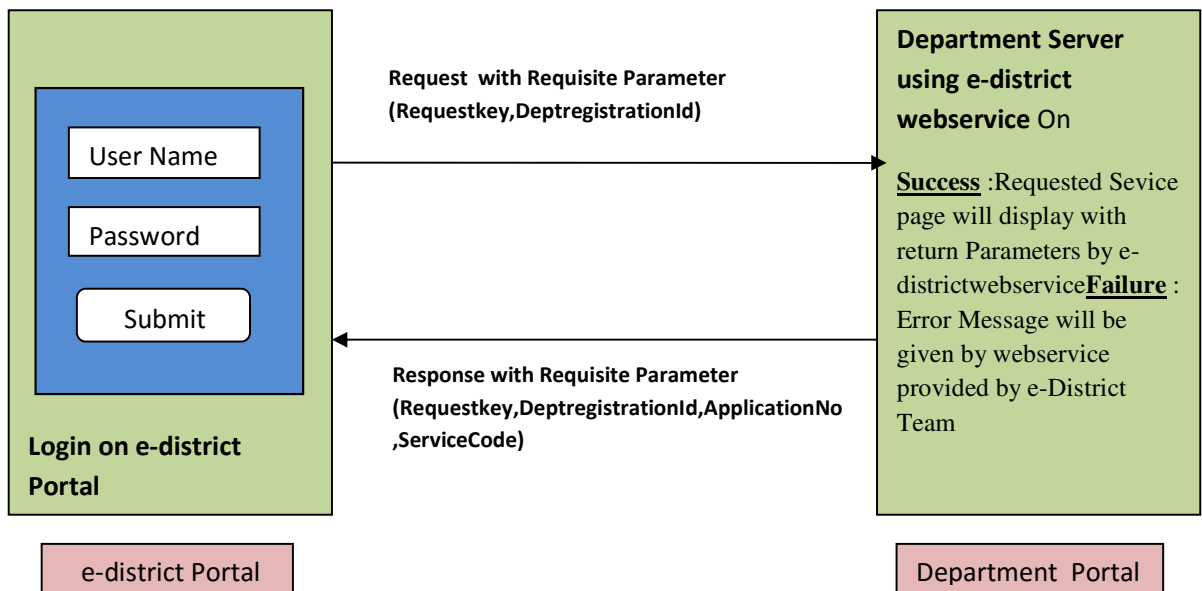
<i>SL #</i>	<i>Input Parameter Name</i>	<i>Format</i>	<i>Example</i>
1	RequestKey	String	Encrypted Pattern
2	DeptRegistraionID	String (MaxLength 32 )	2A1EA89EFE380DC9B051BHGTfDB2A9C9
3	ApplicationNo	String(MaxLength 30)	201509922323AHG/52137123123823
4	serviceCode	String (Max Length 6)	11101/121103

**Description Of Input Parameters:**

- a) **RequestKey** – This parameter can be retrieve on service page of department, basically an encrypted pattern can be obtained by `HttpContext.Current.Request["RequestKey"].ToString()` on service URL page.
- b) **DepartmentRegistrationID** - 32 bit Registration Id that is uniquely provided to each department at the time of department registration to edistrict portal.
- c) **ApplicationNo** – This is generated after filling the particular Application of requested service at department service application page.
- d) **serviceCode** – This will be the code of requested service of department and will be provided by department as last parameter of webservice method. These service code will also be maintained in e-district database.

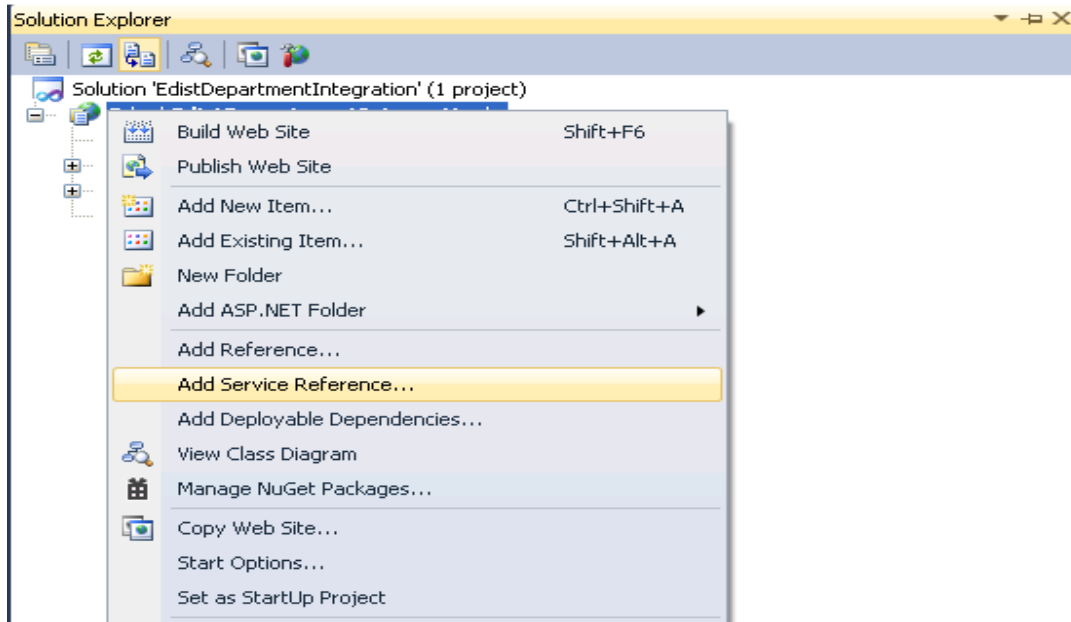
**Output :** Output will a string in the form of XMLdocument that consist Returntype node (1 or 0) i.e. Success or Failure.

The e-district login page and the department’s service page will handshake through this web service and On successful handshaking the service page will reveal with the details of logged in user as shown below.

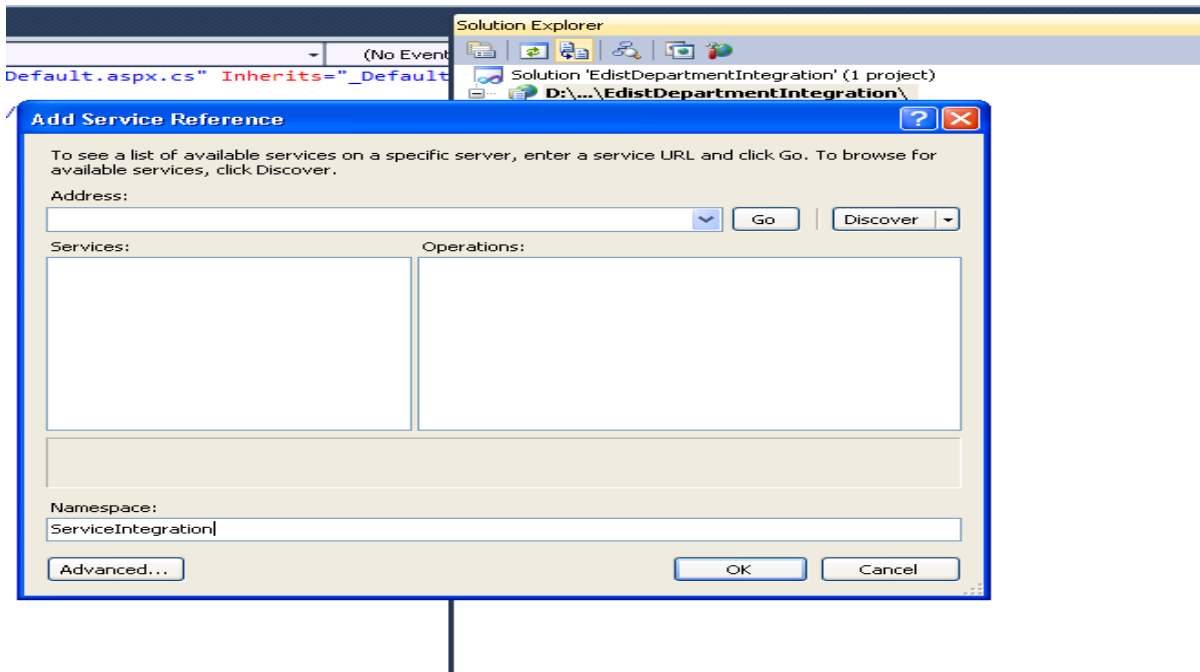


### 3- Method of Consuming the e-district Web Service to Department Project (for .NET Users)

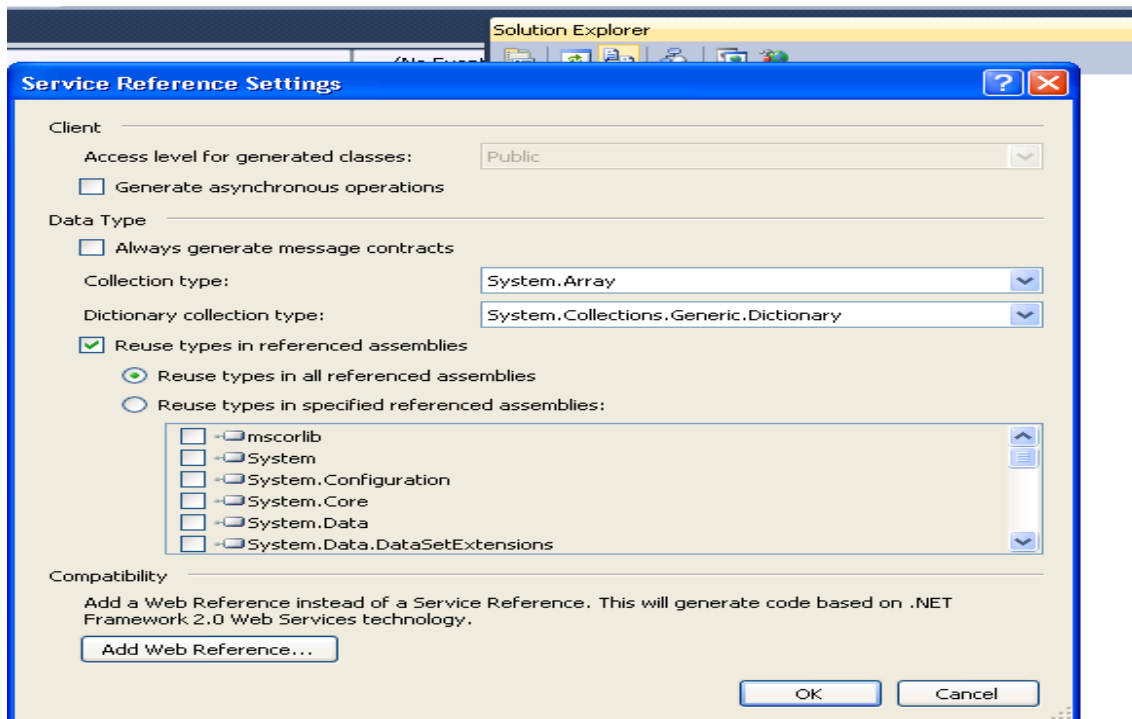
- In the solution explorer of visual studio, right click the project node, choose Add Web Reference.



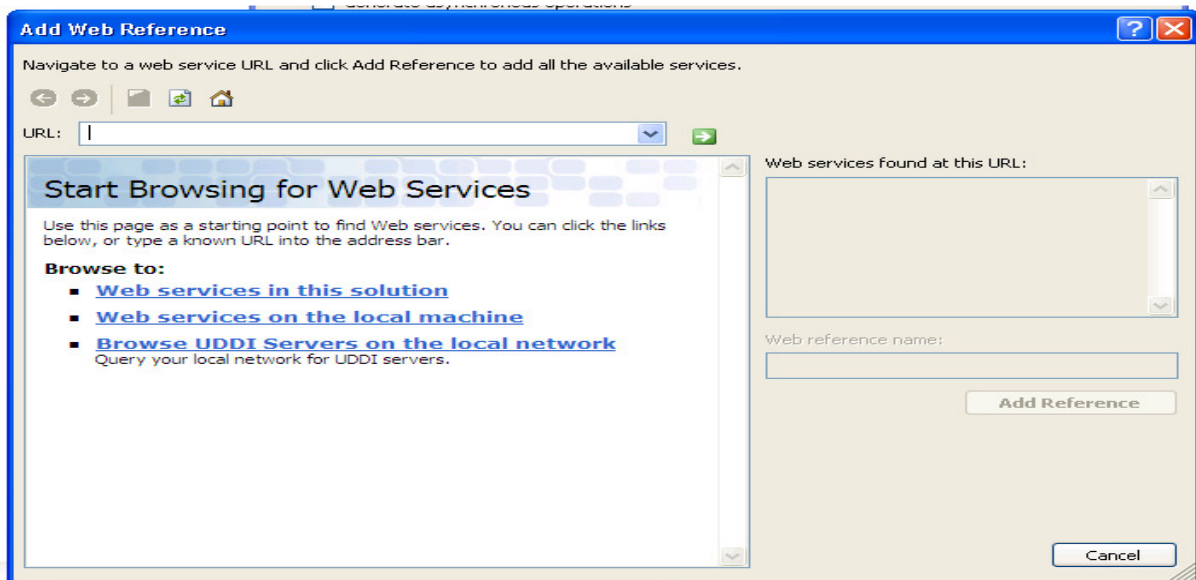
- Click on Advanced Option.



- The service reference setting dialog box will open as given below



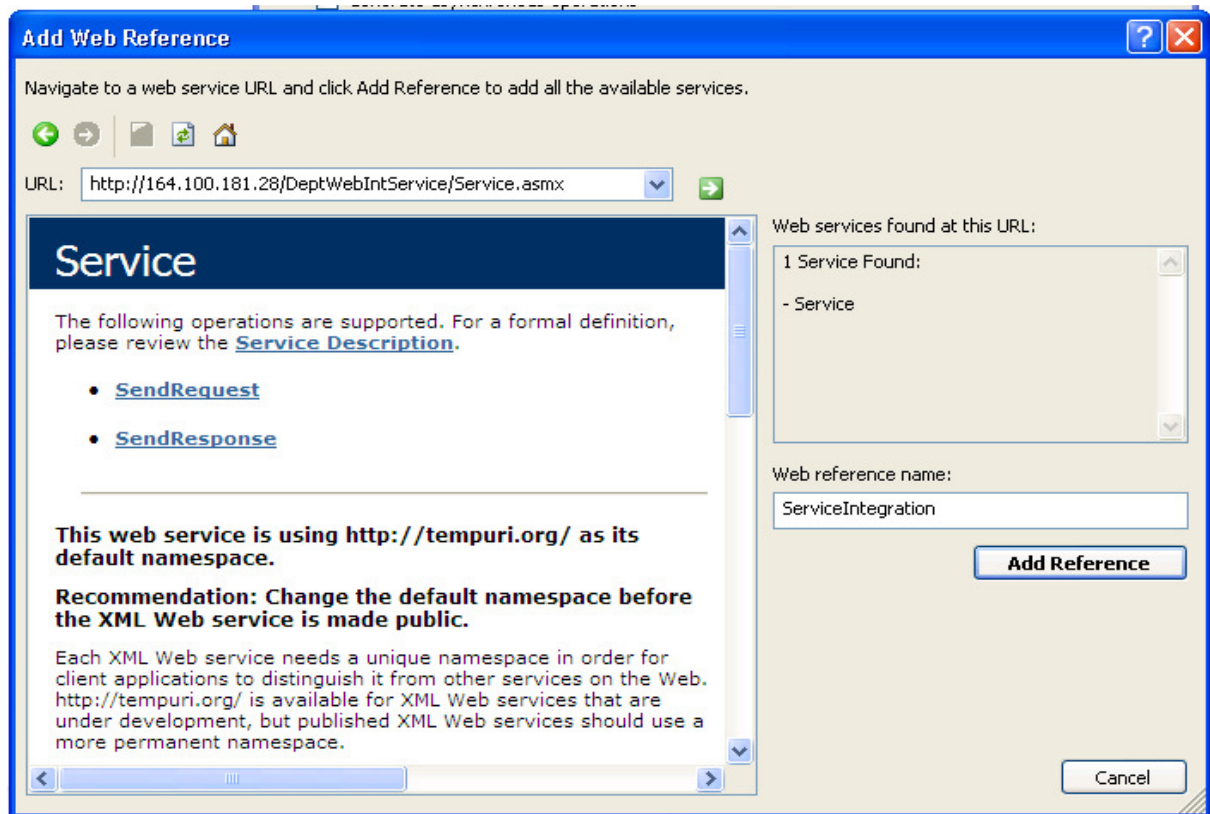
- Click on Add Web Reference to open below dialog.



- 4- In URL Field The integration Web service URL mentioned above

(<http://164.100.181.28/DeptWebIntService/Service.asmx>) and click go button .

It will display webservice description. Give a name to the web-reference, for eg. **ServiceIntegration** and click on Add Reference button. Now the reference of webservice is added to application project.



## 5. Procedure of Calling the Web Service Method on service page

department has to call the methods on the service page which was given during registration. The coding snippet may be used as given below.

### Coding Snippet to complete the Integration Process

#### Request Process (Forwarding from Service page to the Data Entry Page)

I. At The Page Load Event of Department Service List page Add following code :

```
using System;
using System.Collections.Generic;
using System.Linq;
using System.Web;
using System.Web.UI;
using System.Web.UI.WebControls;
using System.Globalization;
using System.Xml;
using ServiceTest;

publicpartialclassDepartmentServicePage : System.Web.UI.Page
{
protectedvoid Page_Load(object sender, EventArgs e)
{
if (!IsPostBack)
{
string ClientID = "2A1EA97EFE380DC9B051BF8355DB2A9C"; //Change The ID with your Department
//registraion ID allotted at the time of registration

//*****START WebserviceCall*****

//Create Object of Webservice
ServiceIntegration.Service objser = new ServiceIntegration.Service();
string strXML =
objser.SendRequest(HttpContext.Current.Request["RequestKey"].ToString(),DeptRegistraionID);
//*****End WebserviceCall*****

//*****START Accessing XML node*****

string xmldata = "<?xml version=\"1.0\" encoding=\"utf-8\"?>" + strXML;//Processing element
//is optional
string username = "";
XmlDocument x = newXmlDocument();
x.LoadXml(xmldata);
string Return_type = x.GetElementsByTagName("Return_type")[0].InnerText;

if (Return_type == "Success")
{
username = x.GetElementsByTagName("User_name")[0].InnerText;
}
else
{
username = "";
}
```

```

}
//*****END Accessing XML node*****
}
}
}
}

```

- II. The Webservice SendRequest method will return string in form of XML data  
And if its **ReturnType** node have inner text **Success** then UserName node value is obtained otherwise blank.**The value of parameter<username> has to be saved by the department in its database to make a distinction between whether the application is requested from e-District portal and /Or Department's own portal.**
- III. Once the value of < UserName> is non empty, Department will redirect to their data entry page otherwise Error Message has to be displayed.

**Return Process: (Return to edistrict portal)**

- IV. After submitting the Application at Entry Page and consequently generation of application number,Add the following code on the click event of your submit button ( for calling the SendResponse methodof web service with given input parameter as given in point no 2).
- V. In Case of Any error/Problem in generation of acknowledgement slip, please check the value of ErrorStatus Node of returned XML from SendResponse Method (if not blank).

```

protectedvoid btnSubmit_Click(object sender, EventArgs e)
{
try
{
string ClientID = "2A1EA97EFE380DC9B051BF8355DB2A9C"; //Change The ID with your Department
//registraion ID allotted at the time of registration
string serviceCode = "32604";//Change this with your service code here (Dummy Data)

//*****START WebserviceCall*****

//Create Object of Webservice
ServiceIntegration.Service objser = new ServiceIntegration.Service();
objser.SendResponse(RequestKey, DeptRegistraionID, ApplicationNo , serviceCode);
//Maintain the value of HttpContext.Current.Request["RequestKey"].ToString() on the service
//entry page from Service List Page(Previous Page ).
//Here RequestKey= HttpContext.Current.Request["RequestKey"].ToString() This value must //be
keep hold on this page from previous department service page.
//*****END WebserviceCall*****
}
}
}
}

```

```

//*****START Accessing XML node*****
string xmldata = "<?xml version=\"1.0\" encoding=\"utf-8\"?>" + stroutPut;//Processing element
is optional
XmlDocument x = newXmlDocument();
x.LoadXml(xmldata);
string Return_type = x.GetElementsByTagName("ReturnType")[0].InnerText;

if (Return_type == "1")
{
    Response.Redirect(URL); //Redirect to acknowledgement slip}
else
{
    //Fail to complete the Process..Write the suitable code/message
}
//*****End Accessing XML node *****
}
}
}

```

## **6. Reconciliation Procedure**

At the day end, Department has to provide the user wise applications no., which was submitted through e-district/ssdg portal on that day for reconciliation purpose. This process may be discussed later and it will be finalized with the department as per their suitability.

**Note :** While integrating your services with e-district portal, Please take care about following issues.

1. The service page should not be opened without proper authentication.
2. Please ask departments to disable the entry in multiple **TABs**. Otherwise **VLE** will use multiple entries in single session, on return we are checking the same so our receipt will not be generated but their data will be updated which caused mismatch while reconciliation.